

Bus Connector KNX

TY-B-KNX



January 2022
Version 1.1



DISCLAIMER

Tyba Home Limited makes no representations or warranties with respect to this manual and, to the maximum extent permitted by law, expressly limits its liability for breach of any warranty that may be implied to the replacement of this manual with another. Furthermore, Tyba Home Limited reserves the right to revise this publication at any time without incurring an obligation to notify any person of the revision.

The information provided in this documentation contains general descriptions and/or technical characteristics of the performance of the products contained herein. This documentation is not intended as a substitute for and is not to be used for determining suitability or reliability of these products for specific user applications. It is the duty of any such user or integrator to perform the appropriate and complete risk analysis, evaluation and testing of the products with respect to the relevant specific application or use thereof. Neither Tyba Home Limited nor any of its affiliates or subsidiaries shall be responsible or liable for misuse of the information that is contained herein. If you have any suggestions for improvements or amendments or have found errors in this publication, please notify us.

All pertinent state, regional, and local safety regulations must be observed when installing and using this product. For reasons of safety and to help ensure compliance with documented system data, only the manufacturer shall perform repairs to components. Failure to observe this information can result in injury or equipment damage.

Copyright © 2022 by Tyba Home Limited

All rights reserved. No part of this publication may be reproduced, distributed, or transmitted in any form or by any means, including photocopying, recording, or other electronic or mechanical methods, without the prior written permission of the publisher. For permission requests, write to the publisher, addressed "Attention: Permissions Coordinator," at the address below.

Tyba Home Limited, Unit 3, Jubilee Way, Faversham, Kent, ME13 8GD, UK
+44 (0) 20 3907 6877 www.tybahome.com

TRADEMARKS

Tyba Home Limited has made every effort to supply trademark information about company names, products and services mentioned in this manual. Trademarks shown below were derived from various sources. All trademarks are the property of their respective owners. General Notice: Some product names used in this manual are used for identification purposes only and may be trademarks of their respective companies.

Product Modifications

Year	Version	Modifications
01/01/2021	1.0	Initial release

Document Revisions

Date	Version	Document Changes
01/01/2021	1.0	Initial draft
29/07/2022	1.1	Updated Terminology

Table of Contents

1	Preface	5
	1.1..... <i>Description of the User</i>	5
	1.2..... <i>Explanation of Safety Warnings</i>	5
	1.3..... <i>Retaining Instructions</i>	5
2	Product Description	6
	2.1..... <i>Intended Use and Reasonably Foreseeable Misuse</i>	6
	2.2..... <i>System Overview</i>	6
	2.3..... <i>Technical Data</i>	7
	2.4..... <i>Product Compliance</i>	7
3	Safety Instructions	8
	3.1..... <i>How to Use Safely</i>	8
	3.2..... <i>Graphical Symbols</i>	8
4	Installation	9
	4.1..... <i>Connections and Physical Details Front</i>	9
	4.2..... <i>Connections and Physical Details Rear</i>	10
	4.3..... <i>Bus Connector Wiring</i>	11
	4.4..... <i>Back Box Options</i>	11
	4.5..... <i>Mounting a Bus Connector using a Euro back box</i>	12
	4.6..... <i>Mounting a Bus Connector using a UK back box</i>	13
5	Setup	14
	5.1..... <i>Powering On</i>	14
	5.2..... <i>KNX Driver Setup</i>	14
7	Maintenance	15



1 Preface

1.1 Description of the User

This User Guide is intended for professional installers such as electricians or system integrators.

1.2 Explanation of Safety Warnings

⚠ DANGER

Danger indicates a hazard with a high level of risk which, if not avoided, will result in death or serious injury

⚠ WARNING

Warning indicates a hazard with a medium level of risk which, if not avoided, could result in death or serious injury.

⚠ CAUTION

Caution indicates a hazard with a low level of risk which, if not avoided, could result in minor or moderate injury.

NOTICE

Indicates information considered important, but not hazard-related.

1.3 Retaining Instructions

Read and understand this manual and its safety instructions before using this product. Failure to do so can result in serious injury or death.

Ensure that each person who uses the product has read these warnings and instructions and follows them.

Tyba Home Limited is not liable for cases of material damage or personal injury caused by incorrect handling or non-compliance with the safety instructions. In such cases, the warranty will be voided.



2 Product Description

2.1 Intended Use and Reasonably Foreseeable Misuse

The KNX Bus Connector is intended to operate as an interface between Tyba products and the KNX proprietary bus. The Bus Connector also provides power and a mounting interface to Tyba products. The KNX Bus Connector is not intended to be used for any function outside those described.

The KNX Bus Connector should be used with the following software, original accessories and components only:

- KNX ETS Software
- Tyba genuine products

2.2 System Overview

The KNX Bus Connector is a product for interfacing Tyba products to the KNX TP proprietary bus. It is also designed to provide a mounting interface for Tyba products as well as power.

2.3 Technical Data

Parameter	Description
Product Name	Bus Connector KNX
Product Code	TY-B-KNX
KNX Bus	30VDC 0.45W
Power	24VDC 5W
Dimensions	W 73.6mm H 73.6mm D 26.7mm
Weight	50g

2.4 Product Compliance

This product complies to all relevant Directives associated with CE, UKCA, IC & FCC. The Declaration of Conformity and further certification documentation can be found at www.tybahome.com/downloads. The Product is in conformity with the following relevant product safety standard:

- BS EN IEC 63044-3

3 Safety Instructions





⚠ CAUTION

Read and understand this manual and its safety instructions before using this product. Failure to do so can result in minor or moderate injury.

3.1 How to Use the Product Safely

When using this product, ensure all guidance is followed regarding technical specification, installation, setup and operation. Never use this product with anything other than Tyba genuine accessories.

3.2 Graphical Symbols

Symbol	Meaning
	The CE Marking on the product is the manufacturer's declaration that the product complies.
	The UKCA Marking on the product is the manufacturer's declaration that the product complies.
	The FCC Marking on the product is the manufacturer's declaration that the product complies.
	The WEEE Marking on the product is the manufacturer's confirmation that the product is not recyclable.

4 Installation

⚠ CAUTION

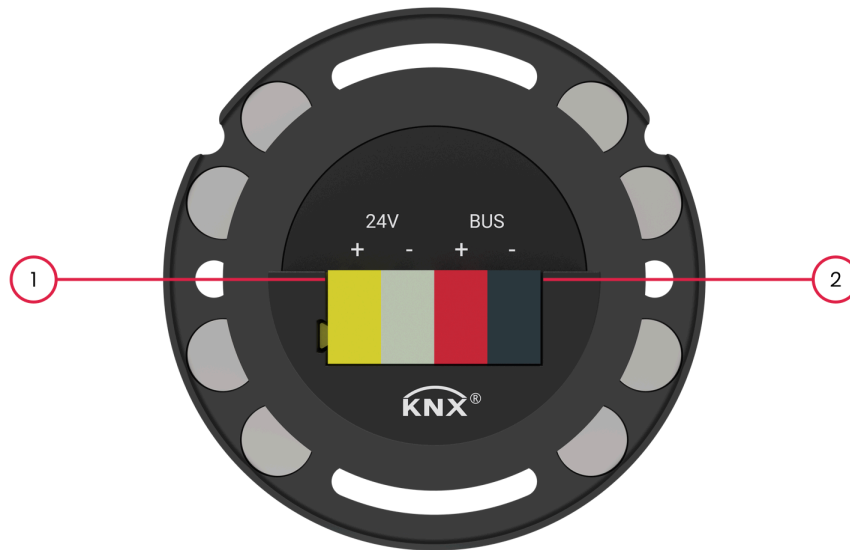
The product should only be installed by a qualified and trained person.

4.1 Connections and Physical Details Front



Key	Description
1	KNX program address button
2	KNX program mode LED
3	Bus Connector proprietary connector

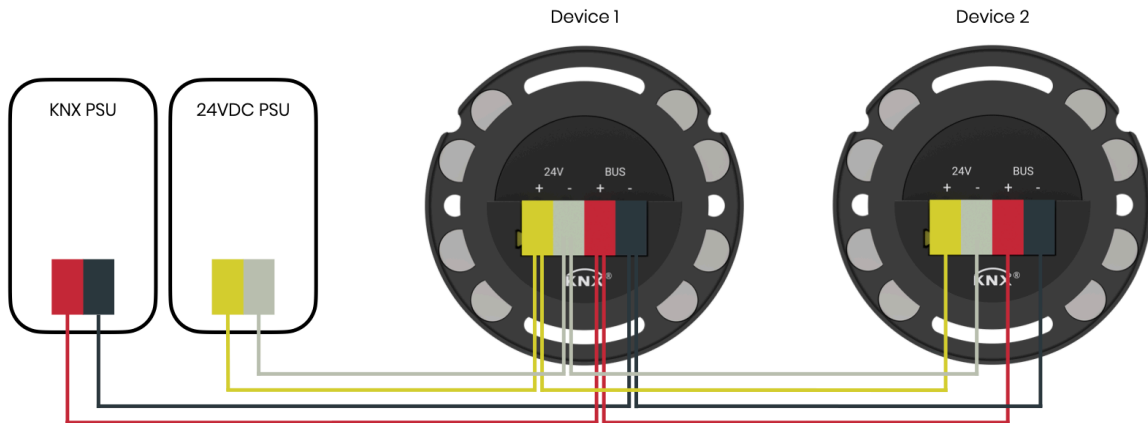
4.2 Connections and Physical Details Rear



Key	Description
1	Power 24VDC 5W
2	KNX Bus 30VDC 0.45W

4.3 Bus Connector Wiring

The Bus Connector KNX should be wired as per the KNX standard, using KNX/EIB cable. The maximum number of devices should be calculated according to the power supply and device consumption.



⚠ CAUTION

Ensure the connections are correct before providing power. Always test the cable polarity.

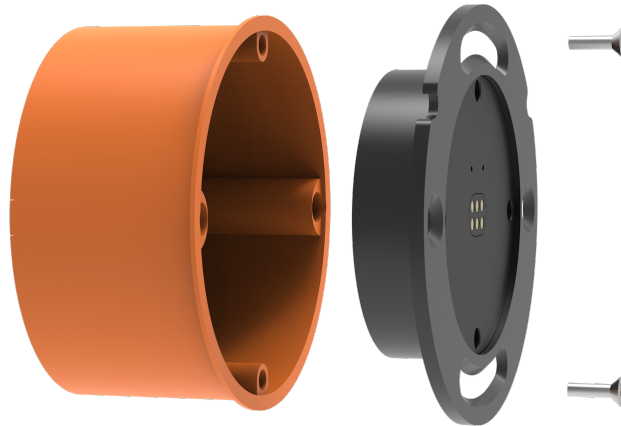
4.4 Back Box Options

Bus Connectors can be used with a range of back boxes depending on your requirements. Bus Connectors provide screw slots top and bottom, as well as counter sunk screw holes left and right, all spaced with 60mm hole centers.

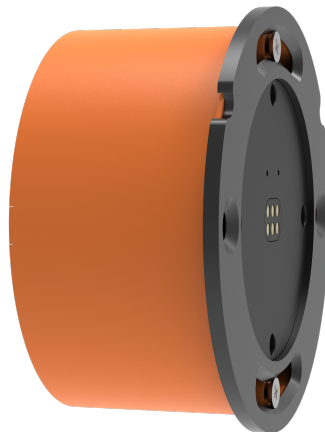
Option	Description
1	Euro style round back box 68mm diameter. Kaiser Elektro O-range 9061-00, 9063-02, 9064-02.
2	UK style square back box with adjustable lug. Requires Wall Plate (TY-B-PLT)

4.5 Mounting a Bus Connector using a Euro back box

Once the back box is installed, align the Bus Connector with the front of the back box and insert it so that the Bus Connector sits flat and square on the wall.



Use the screw slots top and bottom to fix the Bus Connector to the back box. You can rotate the Bus Connector within the bounds of the screw slots to ensure it is level.

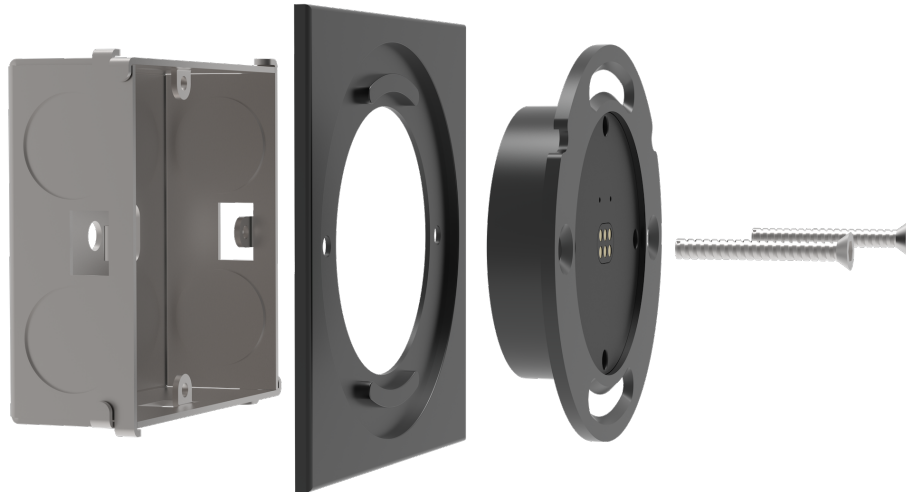


NOTICE

Ensure the Euro back box is installed with the mounting holes top and bottom so that the Bus Connector screw holes align. Do not over tighten the fixing screws.

4.6 Mounting a Bus Connector using a UK back box

Once the back box is installed, insert the Bus Connector in to the Wall Plate. Align the Bus Connector and Wall Plate with the front of the back box and insert it so that the Bus Connector and Wall Plate sits flat and square on the wall.



Use the screw slots left and right to fix the Bus Connector and Wall Plate to the back box.



NOTICE

Ensure the UK box is installed with the mounting lug on either the left or right to provide fine level adjustment. Do not over tighten the fixing screws.



5 Setup

NOTICE

It is recommend that setup is carried out by a qualified and trained person.

5.1 Powering On

Once Bus Connector KNX is powered it will appear in ETS on the default KNX address 15.15.0. Using ETS you can now address and upload to the device as normal.

5.2 KNX Driver Setup

Instructions on setting up the KNX device driver for your application can be found with the KNX device driver download at <https://www.tybahome.com/downloads>.



6 Maintenance

⚠ CAUTION

The product is maintenance free. Repair should only be carried out by a qualified and trained person.